

MEANINGFUL BUSINESS TRANSFORMATION IN THE PHARMA INDUSTRY

Strategy Consulting | Leadership Development | Executive Coaching

WALK

Meaningful Business Transformation

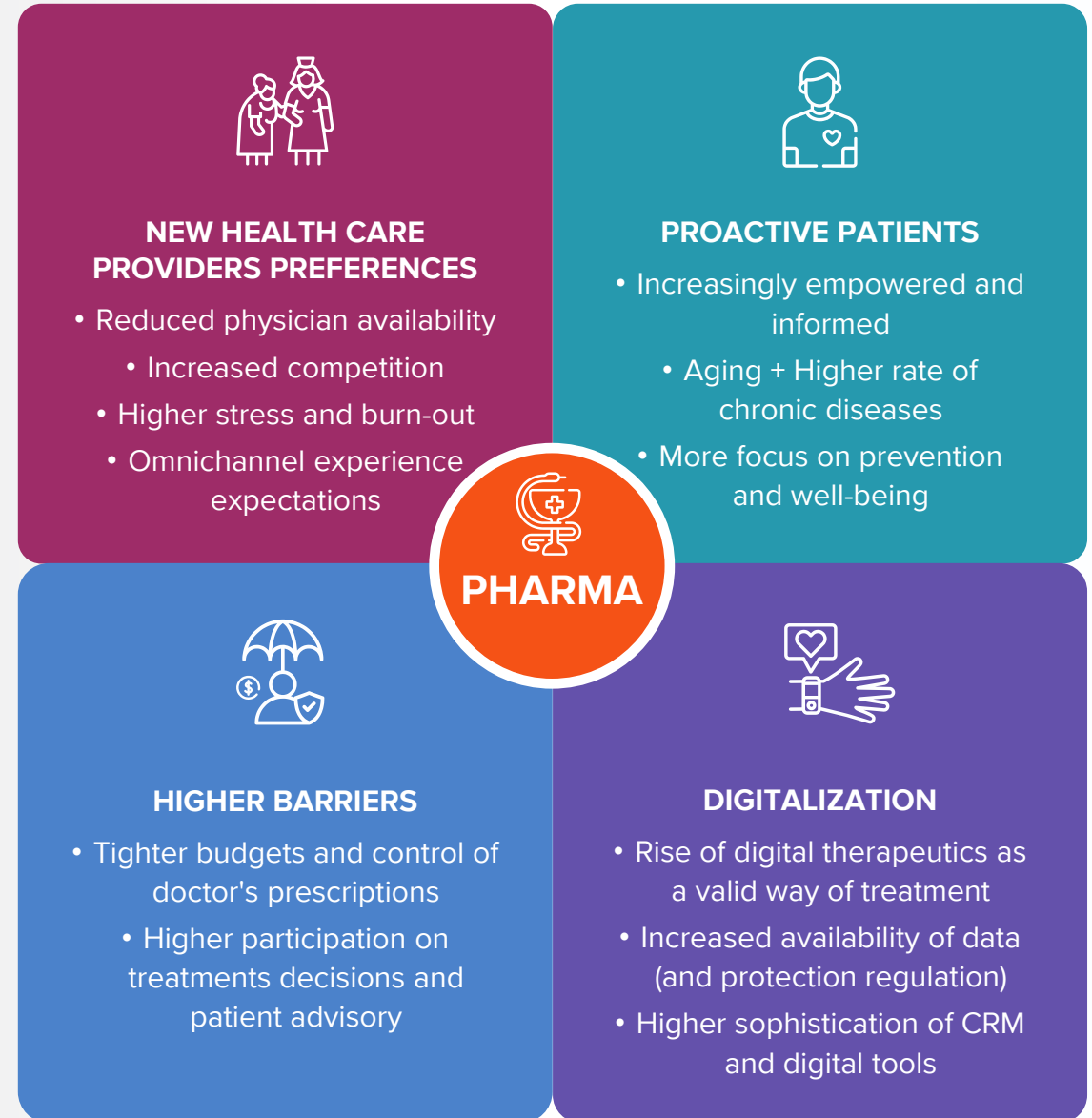
Contents

- 1 Pharma context
- 2 Our value proposition
- 3 Experience in Pharma
- 4 Team
- 5 Intellectual capital

Pharma Context

Leaders of pharma companies are amid unprecedented change

This was true before COVID-19, and now the pandemic and the consequent economic downturn result in traditional go-to-market models being no longer capable of driving significant revenue growth. Pharma companies are facing a diverse set of challenges.



1

Pharma Context

Challenges for a customer engagement excellence



1

GO TO MARKET STRATEGY

- Rethink go-to market organization & setup
- Reconstruct customer engagement model with clear focus on creating value
- Install an omnichannel distinctive customer engagement approach
- Agile, personalized & channel-specific content and services



2

FIELD FORCE AGILITY

- Agility and new ways of working to develop operational excellence favoring:
 - Customer-centricity
 - Cross-collaboration
 - Innovation
- Organization alignment around desired vision, beginning with senior managers leadership evolution



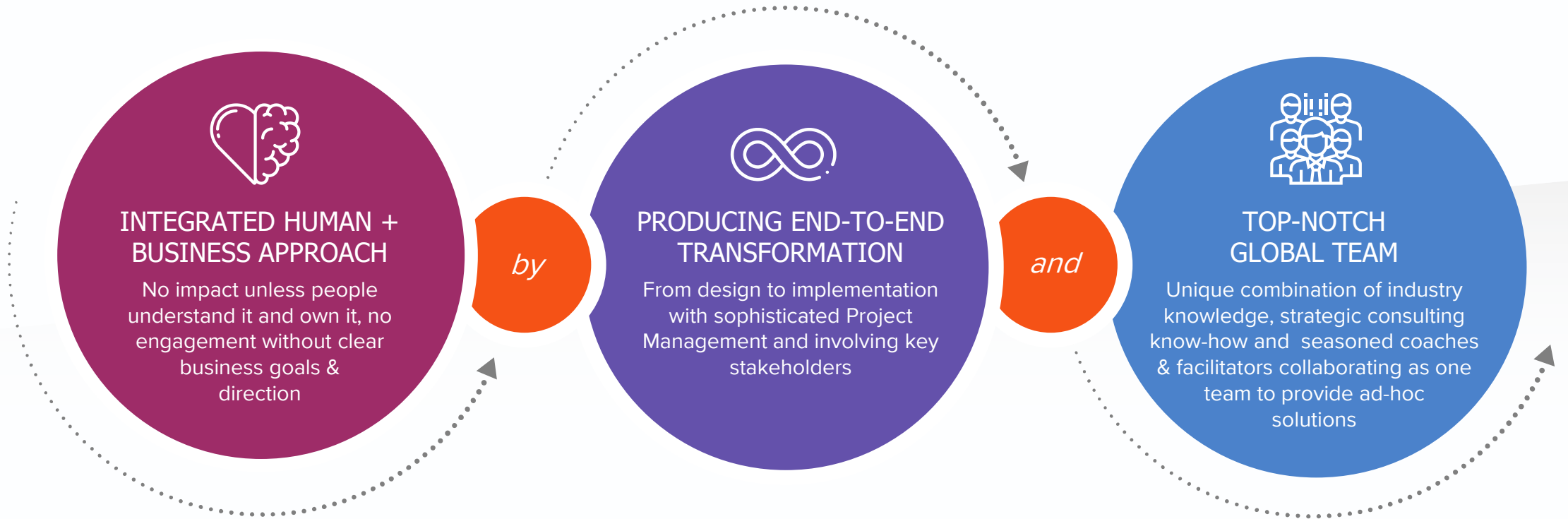
3

DIGITAL CAPABILITIES

- Advanced analytics and data driven insights to increase commercial value and take informed decisions
- Sophistication in obtaining data / insights leveraging digital tools (CRM)
- Development of critical skills and mindset to understand the context, derive insights, monitor results and make decisions quickly



Our value proposition

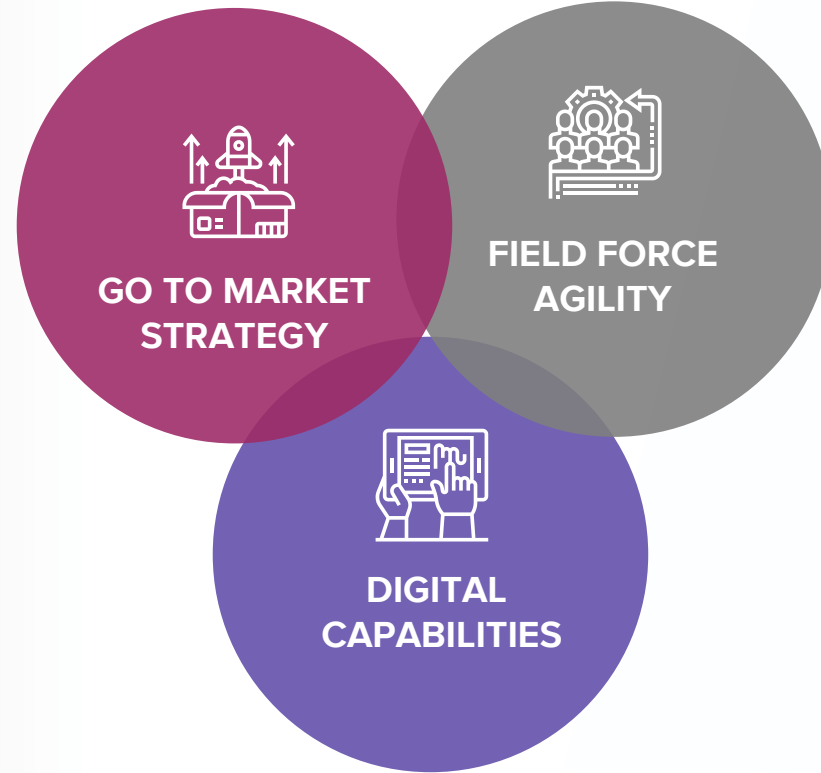


Our Solutions

Executed many projects to evolve strategy, ways of working, organization and tools to enhance customer centricity and drive sales at affiliate and regional level

- New Customer Engagement
- Omnichannel model
- New product launch
- Key Account Management
- Organizational design
- BU Strategy
- Market Access evolution

TRANSFORMATION MODEL



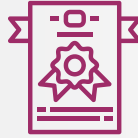
- Field Operations Excellence
- Agile Teams & New Ways of Working
- Senior Leadership Team alignment
- Coaching & training

- Innovation and Commercial Excellence
- Digital product design & development
- HCP & Patients' operational tools and Apps
- CRM adoption
- Agile Portfolio Office
- Data insights



WALK's Approach

We drive tangible change through a combination of sales and customer engagement knowledge, training & development and on the field support



COMMERCIAL EXCELLENCE AND DIGITAL EXPERTISE

- Pharma industry expertise
- Customer centric commercial model
- Frontline excellence and Commercial intelligence
- Sales operations through CRM
- Omnichannel & Digital Marketing
- Cross-industry, best practice benchmarks



TRAINING & DEVELOPMENT

- Training & coaching to key players (Sales, Access & Medical) both field, managers and Senior Leadership Team (SLT)
- Development of key capabilities:
 - WHAT (call preparation and execution, virtual interaction, account management, ...)
 - HOW (commercial mindset, resilience, empowerment, accountability, ...)



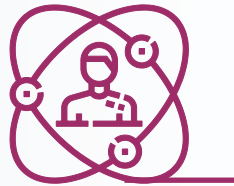
FIELD SUPPORT

- Facilitation of regional meetings for effective adoption of desired operational practices and team dynamics
- Shadowing of managers coaching to sales reps / field force

Systemic approach, working at individual and group level, providing best practices and expert insight with training and coaching to support mindset change and interiorization of new ways of working



Our Experience in Pharma



20+ years of combined experience within the Pharma industry and Healthcare (Payer and Provider)



Experience in top pharma companies at **global and local level**



100+ plus projects addressing most complex and pressuring business topics



Host of **innovative and networking events & panels** including CEOs and start-ups



Global senior team, knowledgeable about the industry

Our broad technical expertise supports clients to addressing complex challenges

Former Management Consultants, CEOs, and Top Executives, with strong project management and facilitation capabilities



Global team

- +200 consultants
- 28 countries
- Local and regional delivery teams
- Development of +1 M executives
- Cultural expertise and language competence
- International subject matter experts



We help global companies navigate complexity

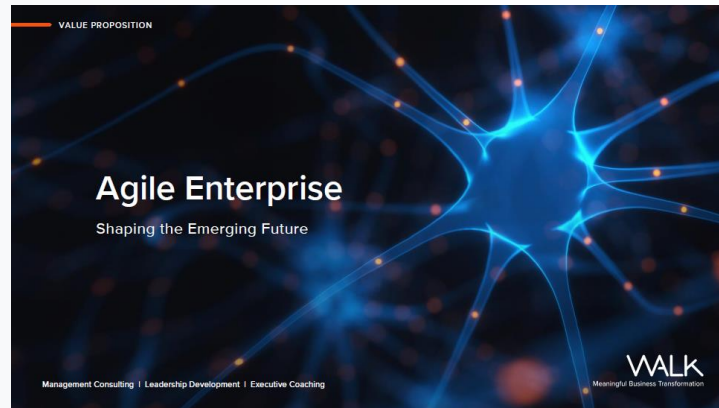
Our clients are large-scale global organizations that span across industries and sectors. We work hand by hand with executive teams and middle managers alike, helping them to embrace and drive change.



Our thinking on pharma business transformation

We articulate thought-leadership insights and events

Papers, case studies, panels and events on how to transform the industry and embrace new ways of working



Relevant intellectual capital and insights on pharma and other industries



Panels and events organized periodically to:

- Engage in insightful talks and conversation with top leaders
- Gain inspiration from other industries
- Create a community of industry leaders facing similar challenges



Meaningful Transformation. Together.

www.walkleadership.com



For more information contact info@walkleadership.com

WALK

Copyright © WALK. All Rights Reserved.

WALK is a global consultancy focused on producing meaningful business transformation through leadership development and cultural change. Combining a team of strategy consultants, organizational psychologists, and leadership facilitators, WALK works with large organizations to ensure effective execution of their business initiatives. We do so by aligning people with strategy and empowering them to embrace a new leadership paradigm for the digital age. WALK's solutions include leadership development programs, alignment of executive teams, organizational engagement at scale, design and deployment of a digital culture, and implementation of new ways of working.